

Calder Centaur

Electrofusion Processor

Operator Instruction Manual



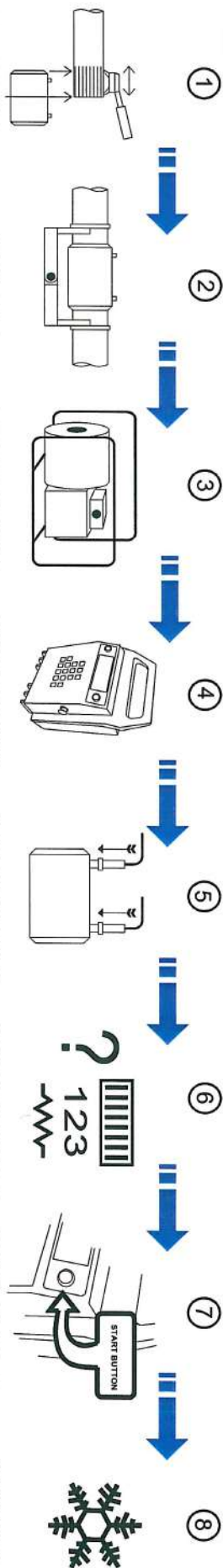
Helping you make the right connections™



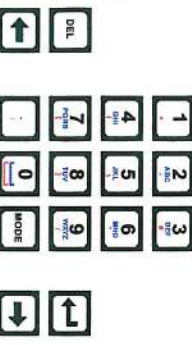
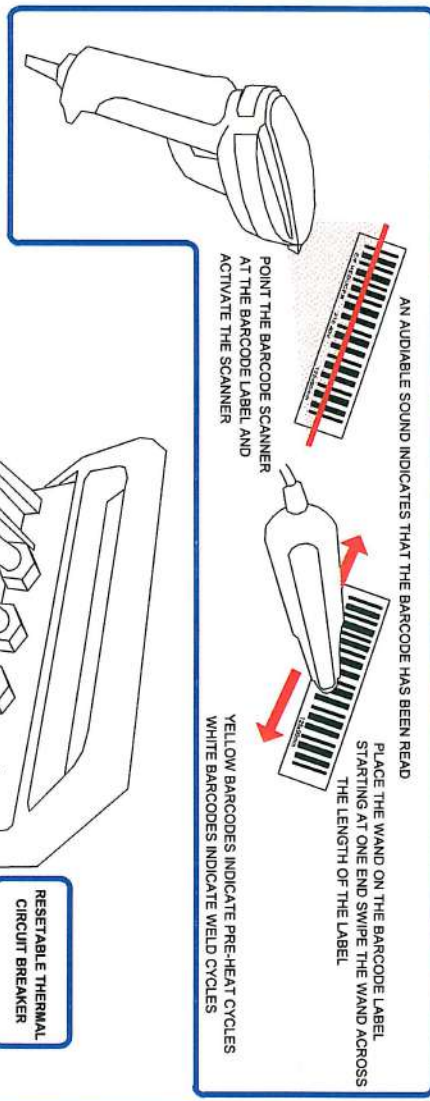
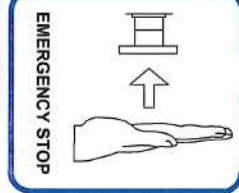
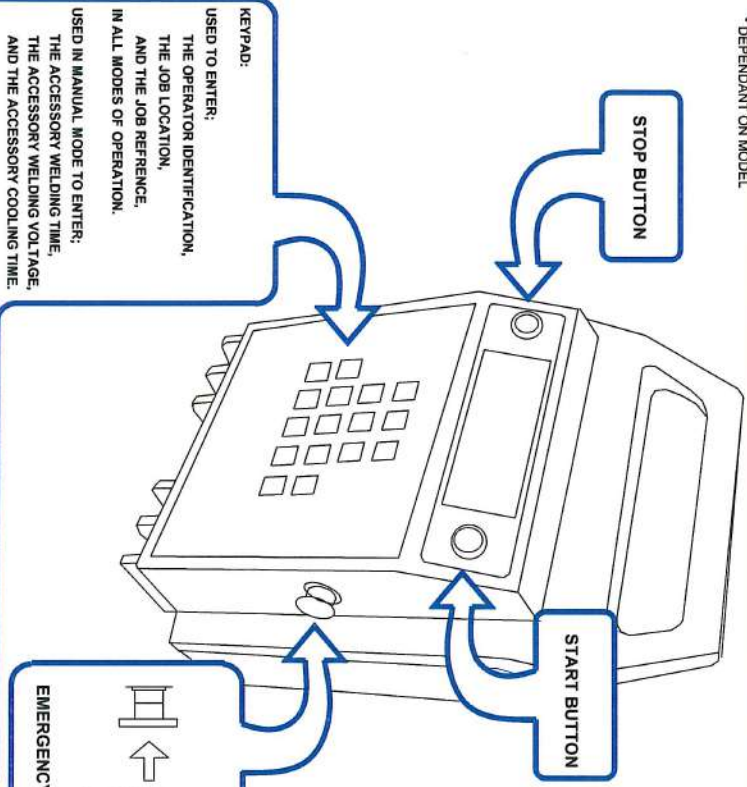
Revision: 08-06-2009

Software Version: 1.00 onwards

©2009 Caldervale Technology Limited.



* DEPENDANT ON MODEL.



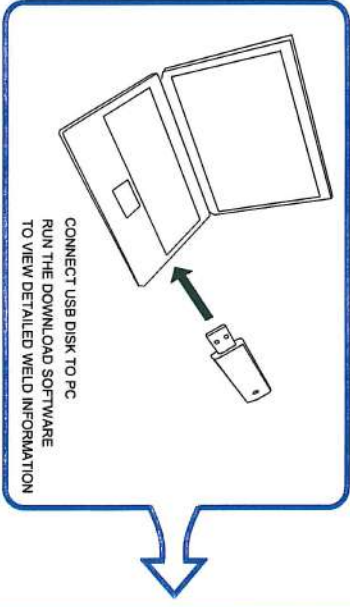
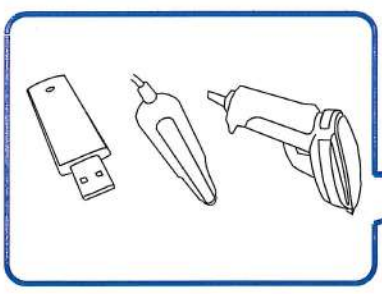
MODE - ENABLES ABC, 123 OR SYMBOL ENTRY (INDICATION OF MODE SHOWN ON LCD)

↑ - MOVE CURSOR TO THE LEFT
 ↓ - ALSO USED TO CONFIRM YES/NO ACTIONS

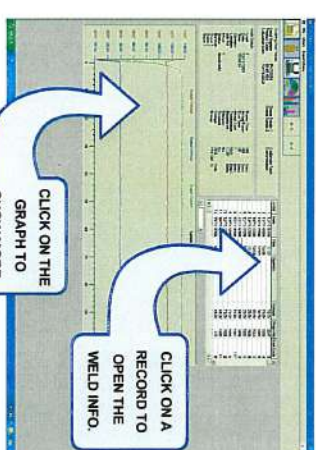
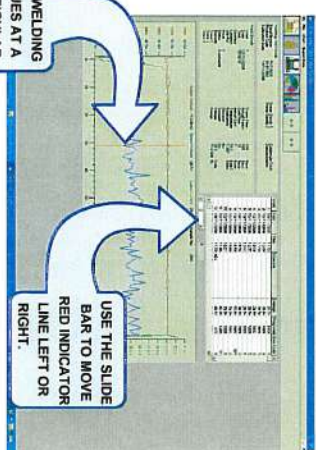
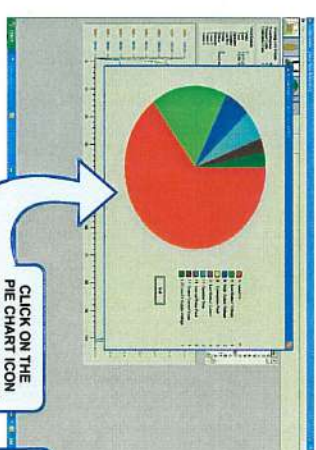
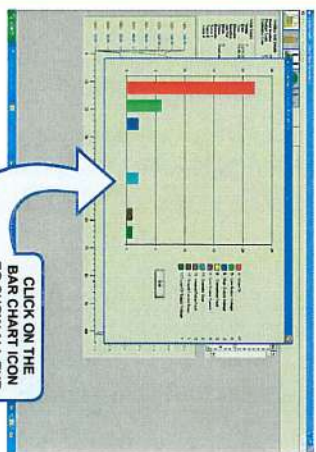
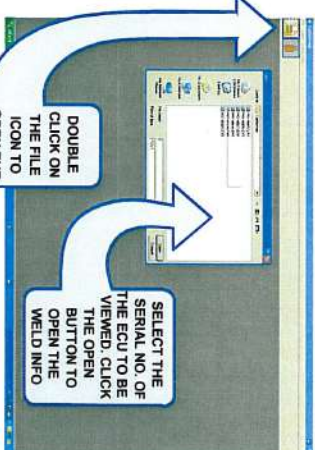
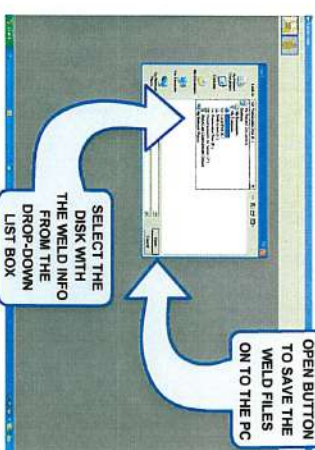
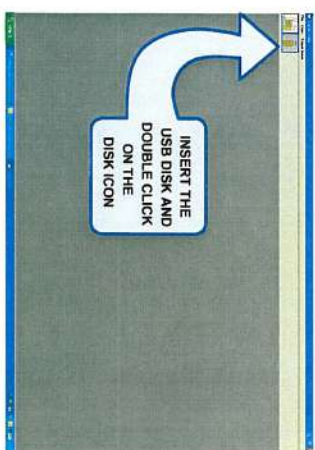
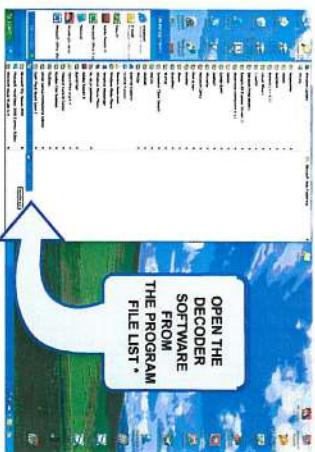
→ - MOVE CURSOR TO THE RIGHT
 ← - ALSO USED TO CONFIRM YES/NO ACTIONS

DEL - ERASES TEXT TO THE RIGHT OF THE CURSOR

↑ - CONFIRM DATA AS ON STANDARD PC KEYBOARD



Calder Safe Download Software



* TO INSTALL THE CALDERSAFE SOFTWARE INSERT THE ORIGINAL USB DISK SUPPLIED WITH THE ECU AND CLICK ON THE INSTALL ICON, THEN FOLLOW THE ON SCREEN INSTRUCTIONS.
CLICK ON THE PRINTER ICON TO PRINT THE RECORD INFORMATION CURRENTLY OPENED.

Specifications.

Operating mode:	Manual Time Entry Bar Code Entry Fusamatic™ Entry (available on request)	Output voltage:	39.5 V ac true rms (default 40V mode) (10 to 48Vac selectable in 40V manual mode)
GPS Location:	(available on request)	Output stability:	+/- 1.5%
Data log memory:	702 welds (last recorded weld saved in high definition)	Output current:	1 A to 60 A (continuous)
Memory download:	USB Flash Disk (supplied with CalderSafe software)	Output power:	40 W to 2370 W
Languages:	English (others available on request)	Operating temperature:	-10°C to +40°C
Input voltage:	110 V ac (88 to 132) <u>or</u> 240 V ac (184 to 276)	Weight:	22.6 kg (excluding output leads)
Input frequency:	50 Hz (40 to 70)	Dimensions:	38,5 x 27,5 x 21.5cm
Input current:	1 A to 30 A with 110V input 1 A to 14 A with 240V input	Protection level:	IP54
Input power:	110 VA to 3300 VA (apparent)	Protection class:	Class 1 (equipment must be earthed)
Power factor:	Apparent 0.72		

Caldervale Technology Ltd has a policy of continuous improvement in product quality and design. Caldervale Technology Limited therefore reserves the right to change the specification of its models at any time, without prior notice and with impunity.

Warnings.

Risk of explosion! This equipment is not to be used in a gaseous atmosphere.

Caution.

Risk of electric shock! Do not open.

Caution.

To avoid damage to the welding unit do not interrupt the input supply or disconnect the output lead from the welding unit or fitting during a fusion cycle.

Caution.

This apparatus must be earthed (grounded).



This product conforms to the RoHS directive.



Not to be disposed of in domestic waste.
Contact your Caldervale Technology Limited or your
local authority for the disposal of this product.

Certificate of conformity

This product has been manufactured in accordance with the following directives:

- 73/23/EEC Low voltage – Electrical Equipment (Safety) Regulations.
- 2002/95/EC Restriction of the use of Certain Hazardous Substances in Electrical and Electronic Equipment Regulations.
- 2002/96/EC Waste Electrical and Electronic Equipment (WEEE) Directive.

This product has been manufactured to meet the following standards:

Safety of Electrical Products:

- ISO 12176-2 Equipment for fusion jointing polyethylene systems. Part 2 : Electrofusion.
- Italian National Standard UNI 10566
- BS 7540-1,2 & 3:2005, BS 7671:2001, BS 7919:2001, BS EN 1555-3:2002,
- BS EN 60068-2:1993, BS EN 60204-1:2004, BS EN 60309-2:1999,
- BS EN 60529:1992, BS EN 60947-1:2004, BS EN 61558-1:1998,
- BS EN 61558-2 & 23:2001, BS EN 62262:2002

This product conforms to the RoHS directive (restriction of hazardous substances)

Contact Caldervale Technology Ltd for
disposal advice of this equipment.



Certificate of calibration.

- This product has been inspected and tested in accordance with the ISO9001 quality control systems and procedures in place at Caldervale Technology Limited, Dewsbury.
- This product has been calibrated using equipment traceable to national and international standards, by a NAMAS (National Accreditation of Measurement and Sampling) accredited laboratory. NAMAS is a service of UKAS (United Kingdom Accreditation Service).
- This product has a twelve month calibration period, active from the date of purchase by the end-user.

Warranty Information.

1. Extent of Warranty.

- (a) Subject to clauses 2 and 3, Caldervale Technology Limited warrants to the end-user customer that its products will be free from defects in materials and workmanship, for one year after the date of purchase by the end-user customer, subject to providing proof of purchase.
- (b) If Caldervale Technology Limited receives, during the warranty period, notice of a defect in product which is covered by this warranty, Caldervale Technology Limited shall either repair or replace the product, at its option. Any replacement product may be either new or like-new, provided that it has functionality at least equal to that of the product being replaced.
- (c) All warranty work will be carried out by Caldervale Technology Limited unless otherwise agreed. On-site warranty and repair or replacement services are available from authorised Caldervale Technology Limited service facilities world-wide.
- (d) Customers shall prepay shipping charges for products returned to Caldervale Technology Limited for warranty service, and Caldervale Technology Limited will charge for return of the products back to the customer.
- (e) This warranty statement gives the customer specific legal rights. The customer may also have other rights which vary from country to country in the world.

2. Pre-conditions for Warranty Application.

Caldervale Technology Limited's warranty covers only those defects which arise as a result of normal use of the product, and this warranty shall only apply in the following circumstances:

- (a) All the instructions contained in the operating manual have been complied with; and
- (b) None of the following apply:
 - (i) Improper or inadequate maintenance;
 - (ii) Unauthorised modification, misuse or any use not in accordance with the operating manual and good industry practice;
 - (iii) Operation outside the products specifications, including duty cycle abuse, and input power abuse;
 - (iv) Improper site preparation or maintenance; and
 - (v) Faulty pipe or fitting.

3. Limitations of Warranty.

- (a) Caldervale Technology Limited does not warrant the operation of any product to be uninterrupted or error free.
- (b) Caldervale Technology Limited makes no other warranty of any kind, whether express or implied, with respect to its products. Caldervale Technology Limited specifically disclaims the implied warranties of satisfactory quality and fitness for a particular purpose.
- (c) To the extent that this warranty statement is inconsistent with the law of the locality where the customer uses the product, this warranty statement shall be deemed modified by the minimum necessary to be consistent with such local law.
- (d) To the extent allowed by local law, the remedies provided in this warranty statement are the customer's sole and exclusive remedies.
- (e) This control unit has been designed to weld the range of fittings available at the time of its design and development. Caldervale Technology Limited can accept NO liability for the units ability or otherwise to weld new or different fittings that subsequently appear in the market place.

Please complete this information and keep it safely with your proof of purchase receipt.

You will require it for any warranty claim.

Where purchased

Date of purchase

Name & address
of purchaser

Type of unit

Serial number